



DIGITAL PHOTO PRINTER

DS40

DS80

Version 3.4.1.0

Printer Driver Instruction Manual

Supported OS: Windows 11

- Safety precautions

Before you use the printer, carefully read the User's Manual to ensure that you use the printer correctly. Be aware that the content complies with the standards at the time the User's Manual section related to safety, including usage and safety precautions, was created.

- Modifications

For product safety, it is prohibited to modify the DS40/DS80 printer, DS40/DS80 printer driver, and CD contents.

- Copyright

The copyrights, trademark rights, and other intellectual property rights related to documents and programs included with this product are the property of Dai Nippon Printing Co., Ltd. and other rights holders. You cannot copy and use these items without the permission of Dai Nippon printing Co., Ltd. except where permitted by applicable laws.

Microsoft and Windows are trademarks or registered trademarks of Microsoft Corporation in the United States and in other countries.

Table of contents

Chapter 1 Installation	1
1.1 Prepare the printer and computer	2
1.2 Install the driver package	2
1.3 Install the printer driver	5
1.4 Install drivers for unspecified devices	6
Chapter 2 Properties	8
2.1 Open the printer properties	8
2.2 Print settings functions	10
2.2.1 Layout	10
2.2.2 Advanced options	11
2.2.3 Paper/Quality	16
2.2.4 Option	16
2.2.5 Color Adjustment	18
2.3 Default values for settings	19
2.4 Color management	20
2.5 Print Area	21
Chapter 3 Update the driver	22
Chapter 4 Delete the driver	29

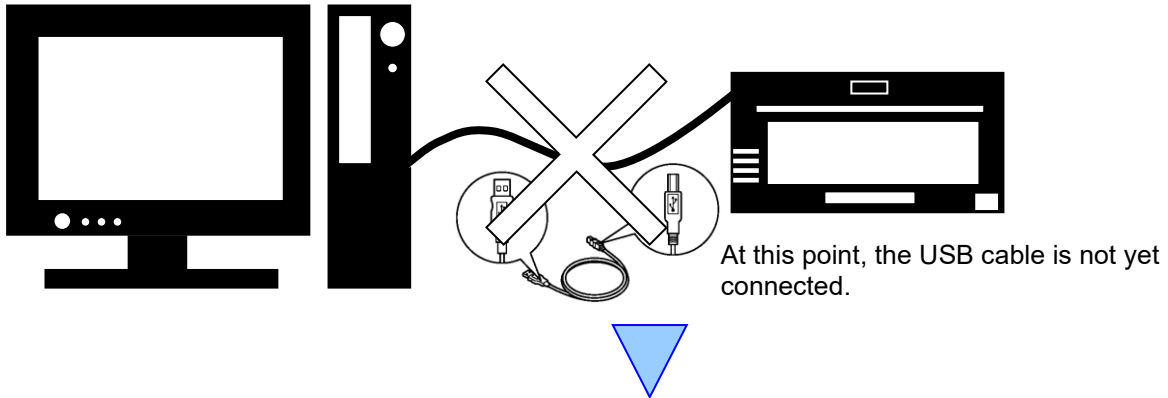
Chapter 1 Installation

Installation procedure

The installation procedure is made up of three steps.
The details of each step are explained below.

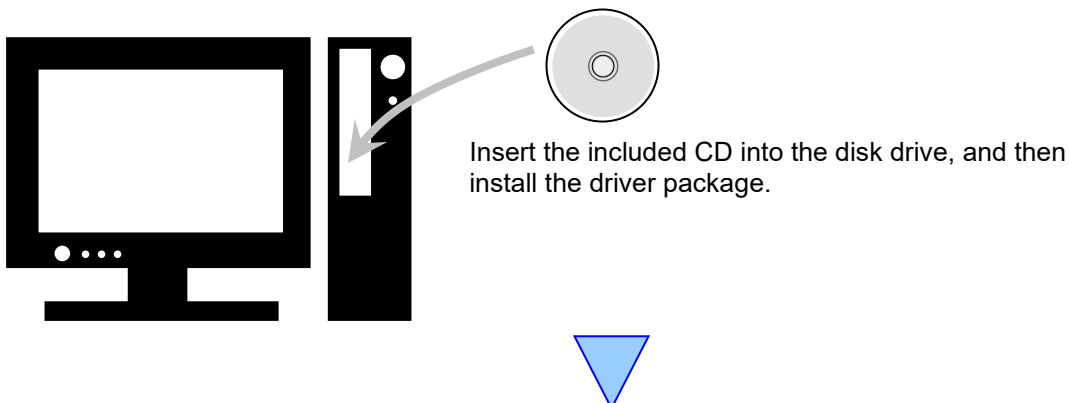
Step 1 Prepare the printer and computer

→ “1.1 Prepare the printer and computer”



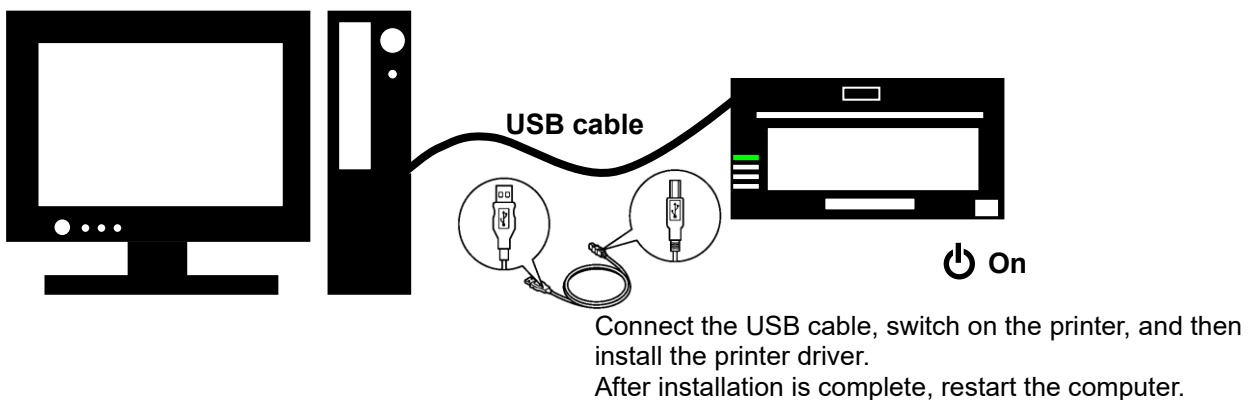
Step 2 Install the driver package

→ “1.2 Install the driver package”



Step 3 Install the printer driver

→ “1.3 Install the printer driver”



IMPORTANT NOTE: This DNP Printer driver can ONLY be installed on Windows11 OS.
Installing this driver onto older Windows operating systems may cause an installation failure or printing errors.

1.1 Prepare the printer and computer

- 1) Make sure that the DS40 printer power is off.
Prepare a USB cable. However, do not use the USB cable to connect the printer and computer at this time.
- 2) Log in to Windows as an administrator. The following explanation presumes that the operations are carried out with administrator privileges.
The following describes the driver installation for the “DS40”, but it is the same for the “DS80”. Please just substitute “DS80” for “DS40” when following the directions.

CAUTION:

The display settings of the computer must be set as follows. If the settings differ from the following, the printing preferences screen and other items may not fit in the display area.

- Resolution: At least 1280x800
- Size of text and other items (DPI): 100%

NOTE: You must UNINSTALL the previous DNP printer PRIOR to installing the DNP v3.4.1.0 or later version Windows11 driver (DS40) , or DNP v3.1.1.0 or later version Windows11 driver (DS80) , especially when the PC has been upgraded from Windows 10 to Windows11.

1.2 Install the driver package

Insert the included CD into the disc drive.

Open Windows Explorer, and then click the corresponding drive.

If AutoPlay is enabled, a message appears stating “Tap to choose what happens with this disk”.

Click the message and select “Open folder to view files Windows Explorer”.

Select the following installation folder. *Select the folder for your usage environment.

DS40 ⇒ CD drive:\\DS_Driver\\DS40\\English\\11

DS80 ⇒ CD drive:\\DS_Driver\\DS80\\English\\11

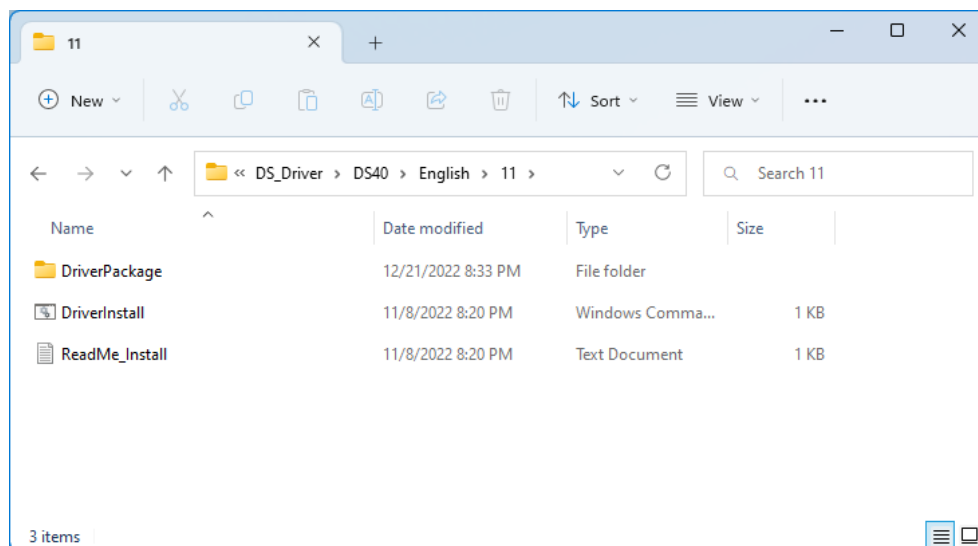


Figure 1.2.1 Driver Package folder

In the selected folder, double click the following file: DriverInstall.CMD. (Depending on your usage environment, the .CMD extension may not be displayed.)

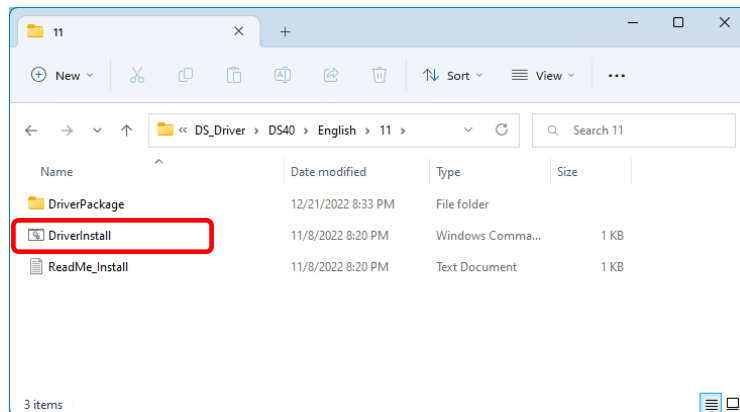


Figure 1.2.2 Installation file

When a User Account Control dialog box appears, click “Yes”.

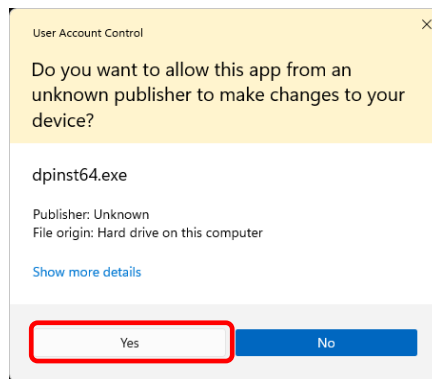


Figure 1.2.3 User Account Control

The “Welcome to the Device Driver Installation Wizard!” screen appears. Click “Next >”.

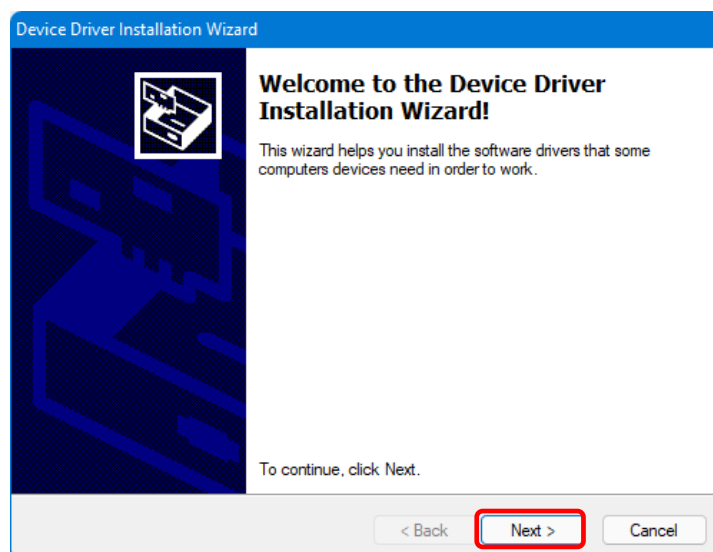


Figure 1.2.4 Start of Installation Wizard

Click “Install” when the Windows Security confirmation display appears.

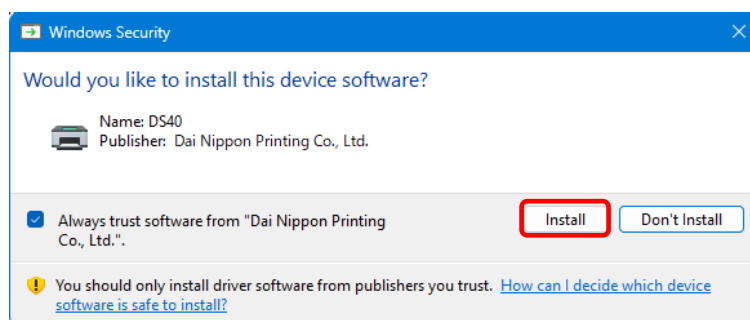


Figure 1.2.5 Windows Security confirmation

Installation of the driver package starts. Wait until installation finishes. The “Completing the Device Driver Installation Wizard” screen appears. Click “Finish”.

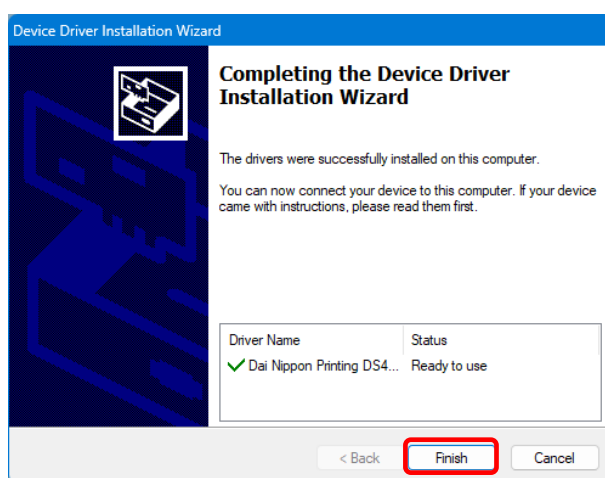


Figure 1.2.6 Finish of Installation Wizard

1.3 Install the printer driver

Use the USB cable to connect the printer and computer, and then switch on the power of the printer. After the printer is recognized, installation of the driver starts.

*For the connection, see the User's Manual of the printer.

Click "Start", select "Settings" -> "Bluetooth & devices", and then open "Printers & scanners".

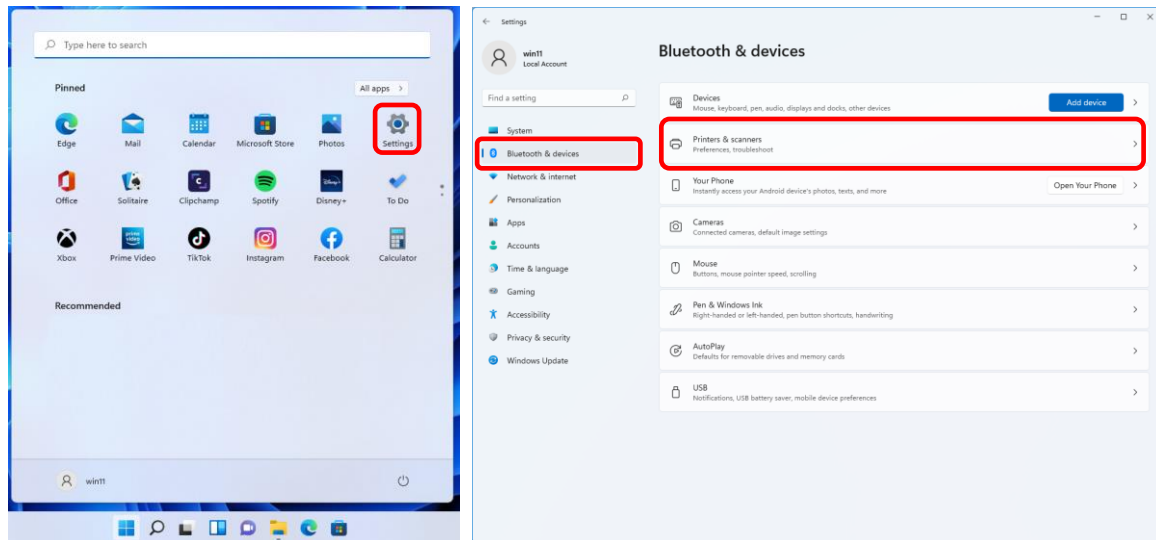


Figure 1.3.1 Bluetooth & devices

On the Printers & scanners screen, check that DS40 appears. This completes installation of the DS40 printer driver.

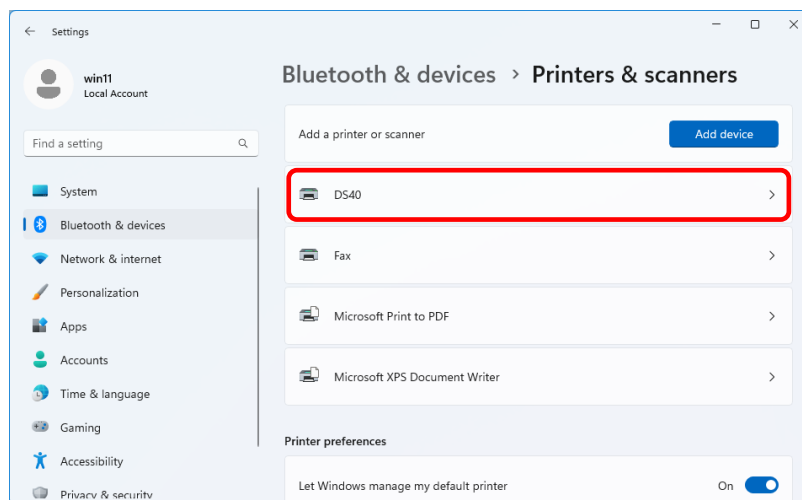


Figure 1.3.2 Printers & scanners

After the installation of the printer driver is complete, always restart the computer.

1.4 Install drivers for unspecified devices

If the printer does not appear on the Printers & scanners screen, select “Devices” on the “Bluetooth & devices” screen. Select “More devices and printer settings” on the “Devices” screen to open the “Devices and printers” screen. If you connect a printer that is on to the computer before installing the driver package, a device is created under “Unspecified” in “Devices and printers”.

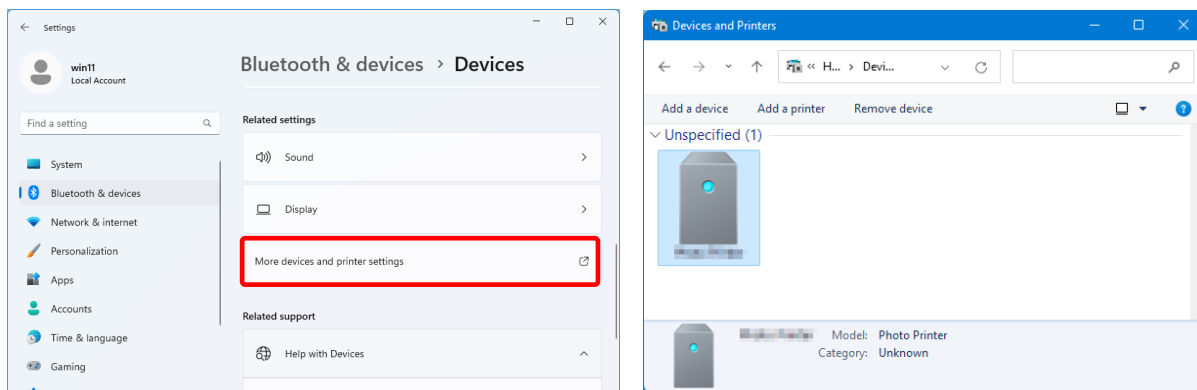


Figure 1.4.1 Photo Printer under Unspecified

In such a case, use the following method to install the printer driver. Furthermore, use the following method to install the printer driver if you use the standard installation procedure (install the driver package, connect the printer, and then install the printer driver), but the driver is not installed correctly, and a device is created under “Unspecified”.

1. Install the driver package

When the driver package has not yet been installed, install it by following the procedure in “1.2 Install the driver package”.

If you install the driver package, installation of the printer driver for the unspecified device completes it automatically.

2. Installing a driver for an unspecified device

Refer to page 7 for the driver installation procedure for an “Unspecified” device after installing the driver package.

1. Right-click “Dai Nippon Printing DS40” of the “Unspecified” device in “Devices and Printers”, and click “Remove device” from the pull-down menu.

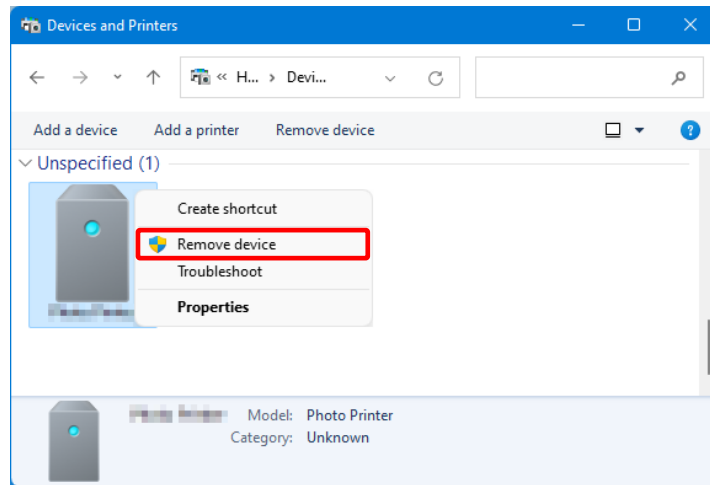


Figure 1.4.2 Delete “Photo Printer”

2. Disconnect the USB cable connected to the printer.
3. Restart your computer.
4. After starting up the computer, connect the USB cable again and turn on the printer.

In Printers & scanners, make sure that DS40 is present.
This completes installation of the printer driver.

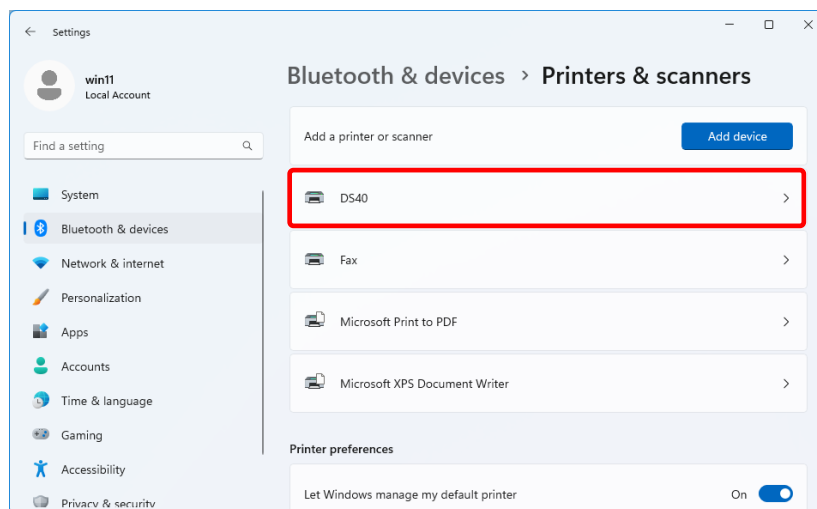


Figure 1.4.3 Printers & scanners

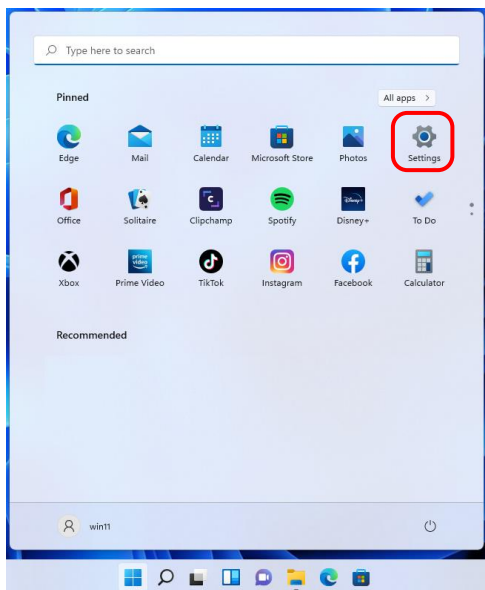
After the installation of the printer driver is complete, always restart the computer.

Chapter 2 Properties

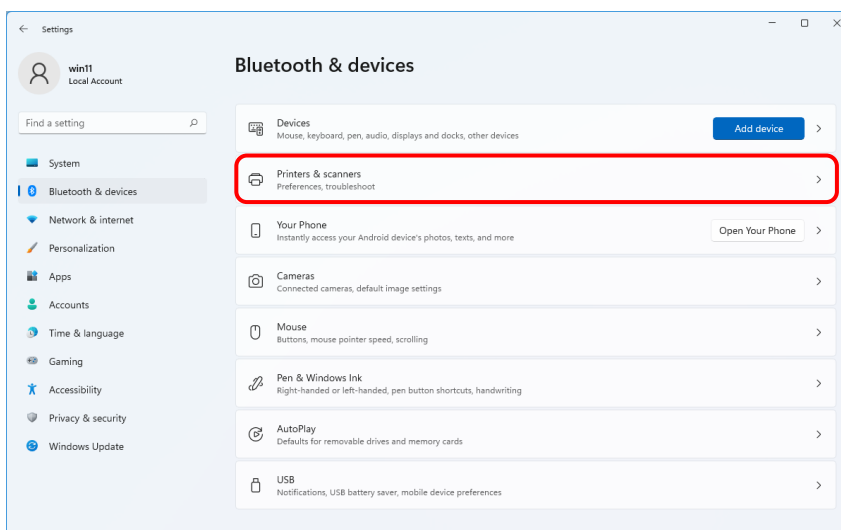
You can configure various printer settings from the Properties of the driver. Make sure you understand the contents well before changing settings. To use the properties, log in as an administrator. Depending on the application you are using, you must perform this operation from the print settings of the application.

2.1 Open the printer properties

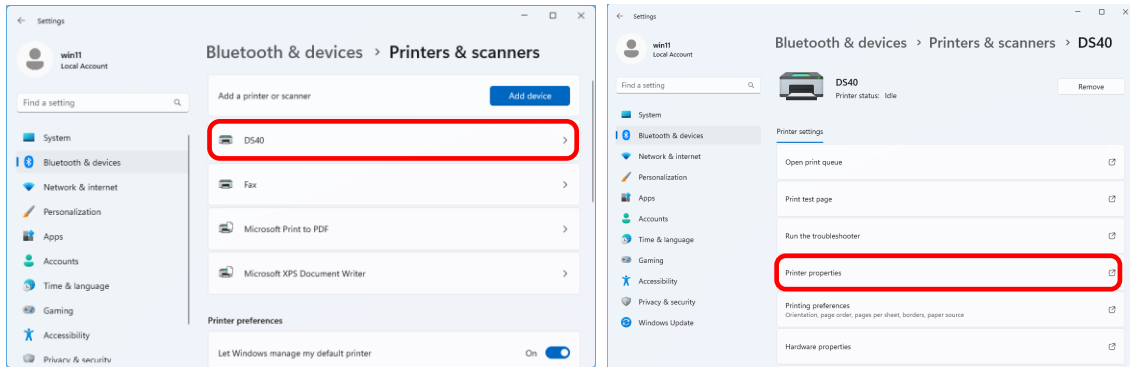
1. Click "Start", and then select "Settings" to open the Settings screen.



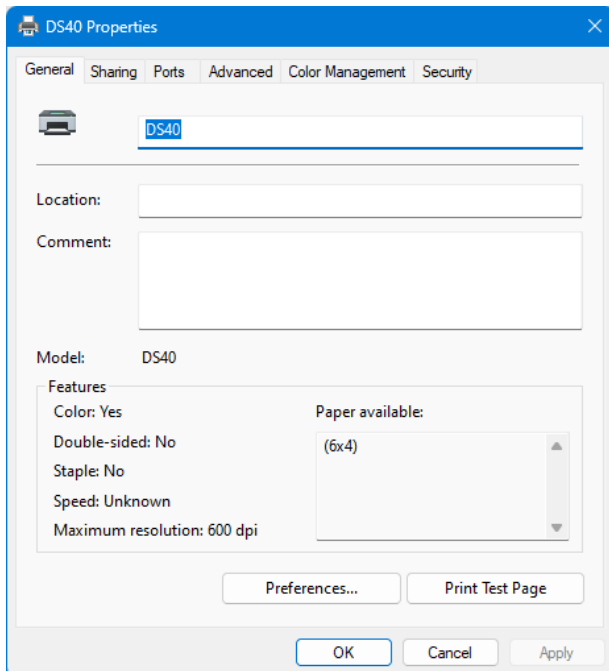
2. From the "Settings" screen, select "Bluetooth & devices" -> "Printers & scanners".



3. Click “DS40”, and then select “Printer properties” to open the Properties screen.



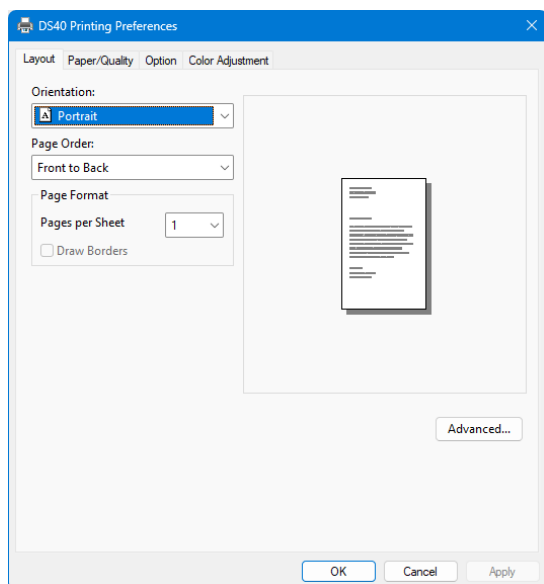
4. The DS40 Properties screen appears.



2.2 Print settings functions

From the Properties window, by selecting Preferences you can make various print settings.

2.2.1 Layout



Orientation

Assign print orientation as vertical or horizontal.

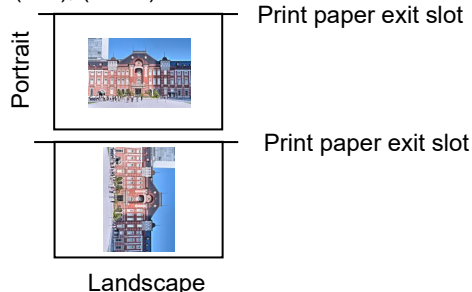
Output images of the original image without rotation are shown at the right.



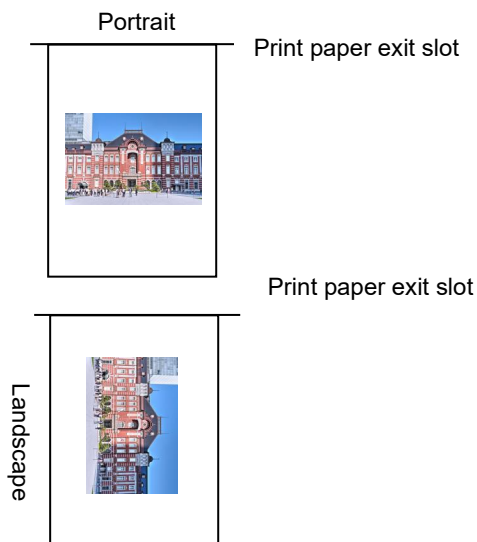
Original image orientation

Output image depending on print direction

Ex.) For (6x4), (5x3.5)



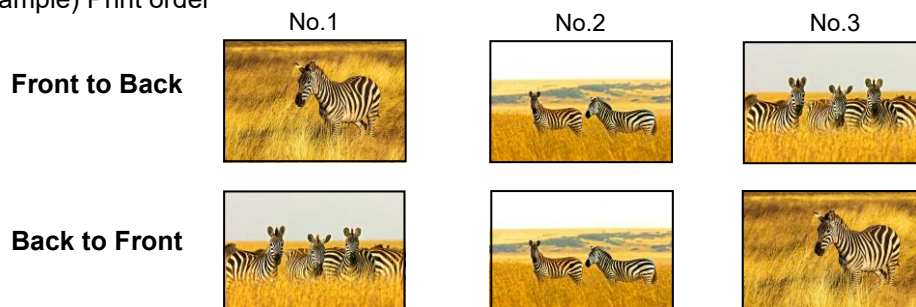
For (5x7), (6x8), (6x9)



Page Order

In the application, specify the order when multiple copies of an image are printed.

Example) Print order



Pages per Sheet

Set printing of the specified division size. In most situations, set "1".

(If you want to specify other than 1, please use the Print Quality settings to 300x300dpi or 600x600dpi)

Example) Division size



2.2.2 Advanced options

If you select “Advanced...” on the Layout tab, you can configure various advanced options.

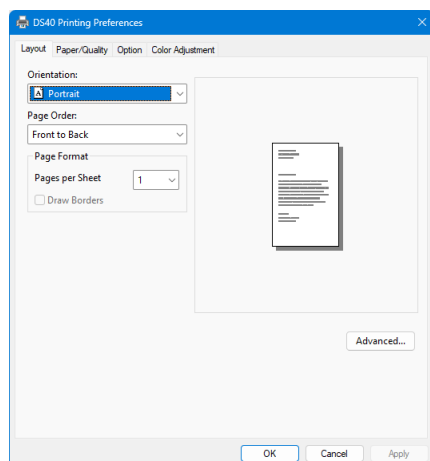


Figure 2.2.2.1 Advanced settings

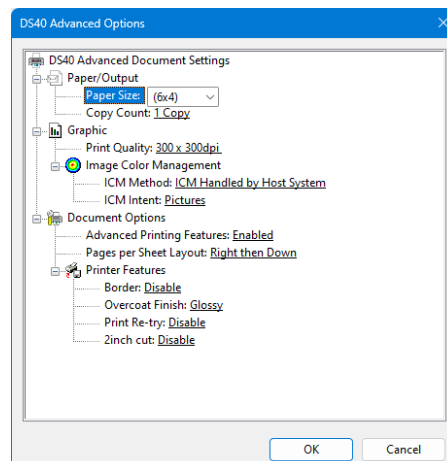


Figure 2.2.2.2 Advanced options tab

Paper Size

You can designate the paper size. Please match the paper size to the media size with which the printer is equipped

Copy Count

You can specify the number of copies to be published for images.

Print Quality

You can designate the print quality.

Print Quality	Function
300 x 300dpi	Printing in the high-speed mode
300 x 600dpi	Printing in the high-quality mode * If the application can not set an asymmetric aspect resolution, please set the 600x600dpi. *When you execute the “Print Test Page” in printer properties, depending on the specifications of the OS, is printed the aspect ratio of the printer mark is different.
600 x 600dpi	Printing in the high-quality mode (Printer driver converts to 300x600dpi data, and sends it to the printer.)

ICM Method

ICM Method	Function
ICM Disabled	Synchronized with “Color Adjustment Disabled” in the 2.2.4 Option.
ICM Handled by Host System	Synchronized with “Color Adjustment ICM” in the 2.2.4 Option. Manage colors using the driver.
ICM Handled by Printer	When this item has been selected, operation is the same as “ICM Handled by Host System”.

ICM Intent

Set the rendering method when using ICM. For the ICC profile, always set to “Pictures”. Do not use other settings.

Advanced Printing Features

Always set “Enabled”. Do not use other settings.

Pages per Sheet Layout

Set the layout direction of an image when the Pages per Sheet setting is set for multiple divisions.

Border

Synchronized with Border in the Option.

Overcoat Finish (Depending on the version of printer firmware being used, "Glossy" may be the only option.)

The overcoat finish for the printed surface can be selected from the following two types.

Overcoat Finish	Function
Glossy	This finishes the print with a glossy surface.
Matte	This finishes the print with a matte (non-glossy) surface.

* Change the printer of the version corresponding to Overcoat Finish and a non-corresponded version, and when you use it by connecting it to the same USB port, when you change printers, reboot the computer.

Print Re-try (Depending on the version of printer firmware being used, "Disable" may be the only option.)

This sets up whether print data in a printer buffer when the error of a printer occurs is printed after error recovery, or it does not print.

Print Re-try	Function
Disable	Printing data in a printer buffer is cleared in the case of a printer error. After an error recovery, the cleared image data must be re-sent. When using an application that has an error recovery function, select this option.
Enable	Printing data in a printer buffer is held in the case of a printer error. After an error recovery, the print process resumes with the saved data. However, if the power is turned OFF, the data will not be saved.

* Change the printer of the version corresponding to Print Re-try and a non-corresponded version, and when you use it by connecting it to the same USB port, when you change printers, reboot the computer.

According to the contents of a printer error, the power supply of a printer needs to be re-switched on for error recovery. In this case, it is not dependent on a setup of Print Re-try, and printing data in a printer buffer is cleared.

Operation by Print Re-try setup in each error is shown below.

Contents of an error	Print Re-try setup is "Disable"	Print Re-try setup is "Enable"
Paper End	Please resend picture data not printed after error recovery.	Printing processing is resumed from data currently held in a printer buffer after error recovery. When paper initialization operation is performed, it is printed after paper initialization operation.
Ribbon End		
Cover Open		
Paper Jam (*1)		
Ribbon Error (*1)		
Paper Definition Error		
Scrap Box Error		
Data Error	For error recovery, the power supply of a printer once needs to be turned OFF. Therefore, print data in a printer buffer is cleared by power-supply OFF of a printer regardless of a setup of the Print Re-try function.	For error recovery, the power supply of a printer once needs to be turned OFF. Therefore, print data in a printer buffer is cleared by printer power-supply OFF even if the Print Re-try function is set to "Enable".
Head Voltage Error		
Head Position Error		
Power Supply Fan Stop		
Cutter Error		
Abnormal Head Temp.		
Abnormal Media Temp.	Please resend picture data not printed after printer re-starting.	Please resend picture data not printed after printer re-starting.
Ribbon Tension Error		
RFID Module Error		
Abnormal motor Temp.		
System Error		

*1: After an error stop, a paper or a ribbon should perform removal work of an error factor according to a printer user's manual.

2inch cut *Correspondence Model:DS40

(Depending on the version of printer firmware being used, "Disable" may be the only option.)

In the case of the specific paper size of DS40, it sets up whether it cuts into two or more sheets by the length of 2 inches.

2inch cut	Function
Disable	Cut at the normal size.
Enable	Cut at 2-inch lengths so that the 6x4 size becomes two sheets and the 6x8 size becomes four sheets.

< Multiple layout >

When the DS40 is using 6x9(A5W), 6x8 or DS80 is using 8x12, 8x10 size media, 2 or 3 image layout is possible.

With the printer driver paper setting, multi-image layout is made possible, and the image sizes are as follows.

Layout designation

	Driver paper setting (layout)	Image size(mm)	Using media
DS40	(6x4) x 2	(156.1x105.0) x 2	6x9(A5W), 6x8
DS80	(8x4) x 2	(207.3x104.6) x 2	8x12, 8x10
	(8x5) x 2	(207.3x130.0) x 2	8x12, 8x10
	(8x6) x 2	(207.3x155.4) x 2	8x12
	(8x5) _ (8x4)	(207.3x130.0) + (207.3x104.6)	8x12, 8x10
	(8x6) _ (8x4)	(207.3x155.4) + (207.3x104.6)	8x12, 8x10
	(8x6) _ (8x5)	(207.3x155.4) + (207.3x130.0)	8x12
	(8x8) _ (8x4)	(207.3x206.2) + (207.3x104.6)	8x12
	(8x4) x 3	(207.3x104.6) x 3	8x12

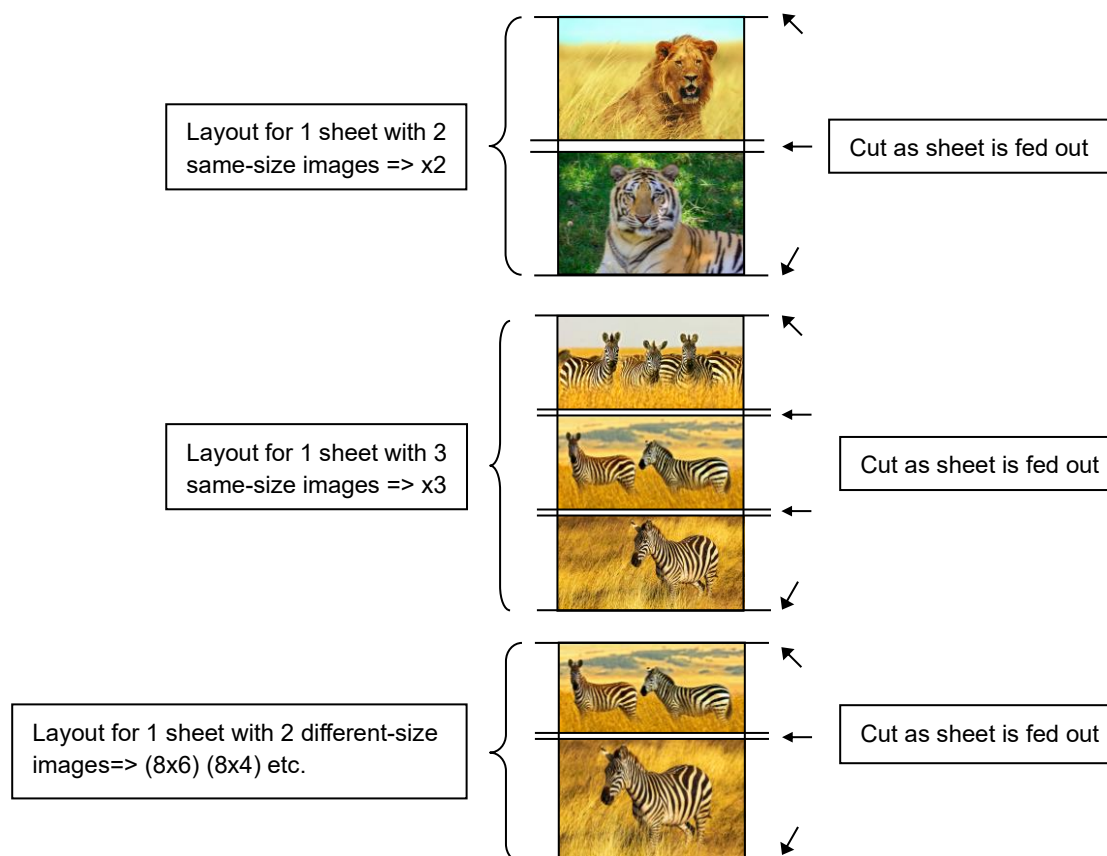
Multiple layout is possible under the following conditions.

1. The printer is using 6x9, 6x8 or 8x12, 8x10 size media.
2. The printer driver paper size is set to one of the above sizes.
3. Multiple images are sent from the application.

Note) Because the multi-image layout occurs on a per job basis, this works when there are multiple images for 1 job. If you want to print the same image, be sure to send the image data for each copy to be printed. The printer prints 2 or 3 images in one operation, and the paper is cut as it is fed out.

<Multi-image layout patterns>

The following combinations are possible for the multi-image layout patterns.



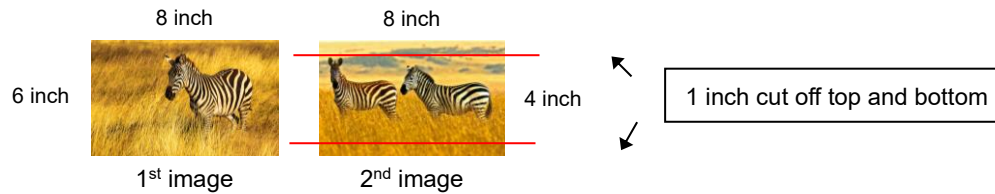
Cautions for printing 2 different-size images on one sheet

When printing 2 different-size images on 1 sheet, 1 inch will be cut off the top and bottom of the 2nd image when the image is being generated. When creating the original image, be aware of the following points.

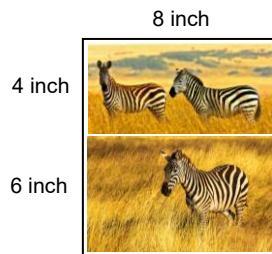
Ex.) When the layout is set for (8x6) (8x4)

The driver creates the layout image in the order of (i), (ii).

(i) It creates two 8x6inch images

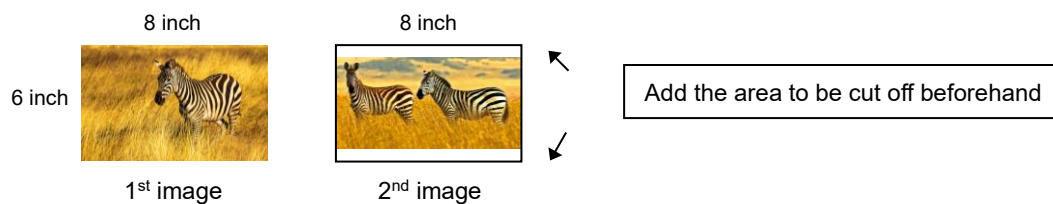


(ii) The driver then lays out the 2 different-size images from (i) as one (8x10) image and outputs it to the printer.



Ex.) Example of creating the original image.

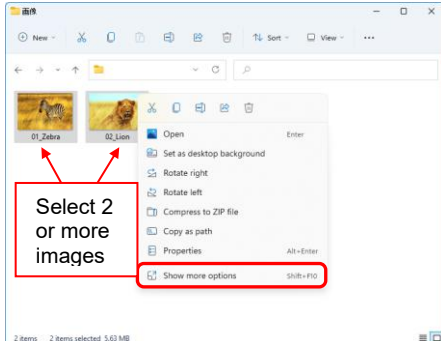
When outputting the original image to the driver, the 1st and 2nd images are created as the same size, so factor in the space that will be cut off from the 2nd image.



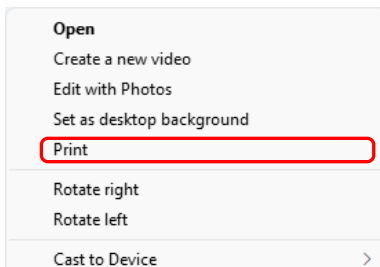
< Application usage example >

This usage example uses Windows Explorer.

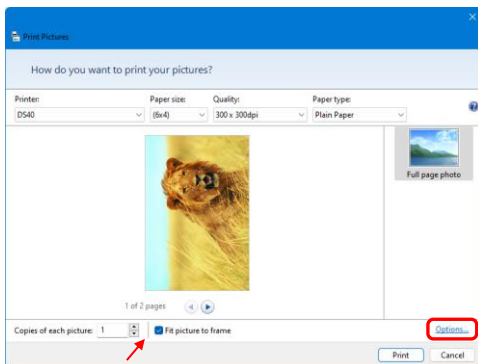
Step 1. In Windows Explorer, select two or more pictures. Next, click “Show more options”.



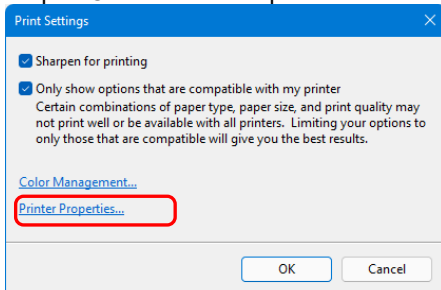
Step 2. Click “Print”.



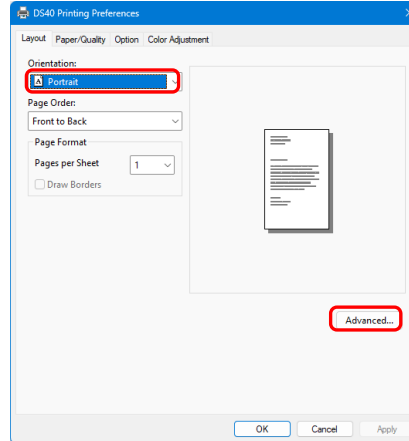
Step 3. Select “Fit picture to frame” check box, and then click “Options...”.



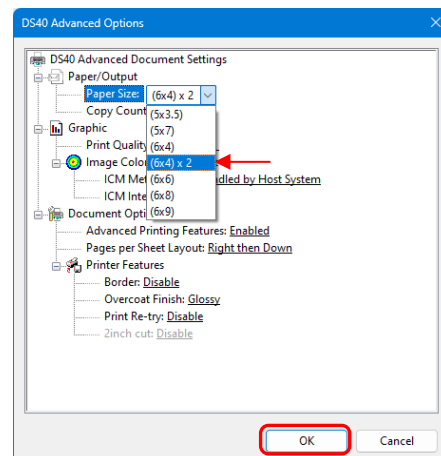
Step 4. Click “Printer Properties...”.



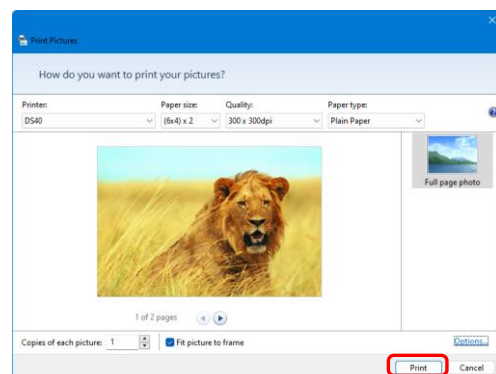
Step 5. Set the Orientation to “Portrait”, and click “Advanced...”.



Step 6. Set the paper size to the setting of the multiple layout. Click “OK” twice to close the dialog boxes in Step 6 and 5 and return to the display in Step 3.



Step 7. Click the “Print” button.



2.2.3 Paper/Quality

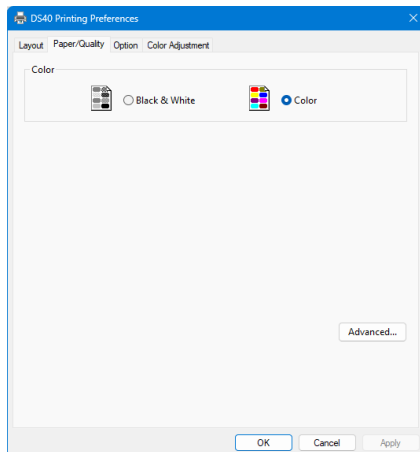


Figure 2.2.3 Paper/Quality tab

Color

Set Color. Do not use black and white.

2.2.4 Option

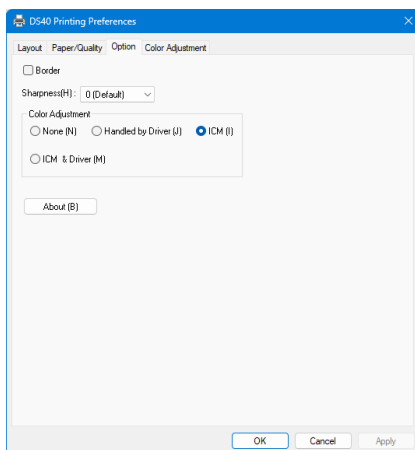


Fig 2.2.4.1 Option tab

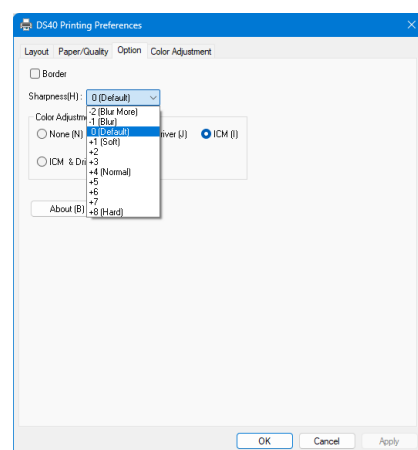


Fig 2.2.4.2 Sharpness setting

Border

Specify a border for printing. (Select the check box for a border.) Synchronized with Border Enable/Disable in the Advanced settings.

Sharpness

Process sharpness using one of the 11 stages (Figure 2.2.4.2). If the setting is 0 (Default), sharpness is not processed.

Moving to the minus (-) side blurs the image and moving to the plus (+) side sharpens the image.

Color Adjustment

None

Synchronized with the ICM Method in the Advanced settings. If this check box is selected, ICM is disabled, the Color adjustment tab is also disabled, and the printer driver does not carry out color adjustment.

Handled by Driver

If this check box is selected, ICM is disabled, and the 2.2.5 Color Adjustment is enabled. The result is applied to the adjustment values of the following items: Gamma, Brightness, Contrast, and Chroma.

ICM

Synchronized with the ICM Method of the Advanced settings (ICM Handled by Host System). If this check box is selected, the driver manages colors.

ICM & Driver

If this check box is selected, ICM (color management) and the 2.2.5 Color Adjustment are enabled.

About

Show the driver version.

2.2.5 Color Adjustment

If the Handled by Driver check box is selected in the 2.2.4 Option, the adjustment values of the Color Adjustment tab are applied to the image.

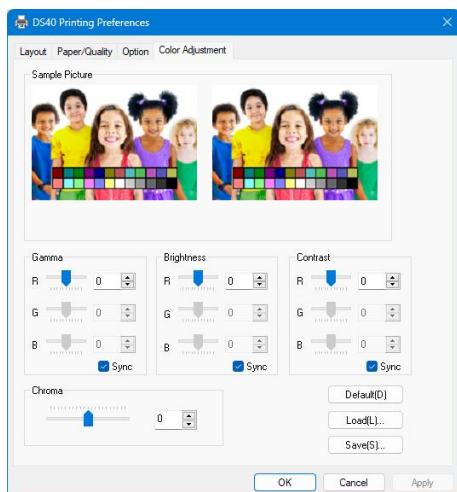


Fig 2.2.5 Color Adjustment tab

The following section shows the setting ranges on the Color Adjustment tab.

Adjustment item	Adjustment value
Gamma	-100 (dark) to 100 (bright) ("0" results in no adjustment, γ2.0 to 0.5) Adjust the density of the half-tone section of the image. Increasing the gamma value brightens the half-tone section. Sync check box ON: Set RGB to same value. OFF: Set RGB to different value.
Brightness	-100 (dark) to 100 (bright) ("0" results in no adjustment) Adjust the brightness of the image. Increasing the brightness value brightens the entire image. Sync check box ON: Set RGB to same value. OFF: Set RGB to different value.
Contrast	-100 (weak) to 100 (strong) ("0" results in no adjustment) Adjust the contrast of the image. Increasing the contrast value increases the difference of brightness and darkness. Sync check box ON: Set RGB to same value. OFF: Set RGB to different value.
Chroma	-100 (weak) to 100 (strong) ("0" results in no adjustment) Adjust the chroma of the image.

2.3 Default values for settings

The following section shows the default values of the settings (at installation). If the settings have been changed, and the printer driver no longer operates normally, return to the default values shown below.

Note) Depending on the service pack of your operating system or your usage environment, the default values at installation may differ from those in the chart below.

Chart 2.3 Default print settings

Chart 2.6 Default print settings

Tab	Setting			Value	
Layout	Orientation			Portrait	
	Page Order			Front to Back	
	Pages Per Sheet			1	
Paper/Quality	Color			Color	
Option	Border			Disable	
	Sharpness			0 (Default)	
	Color Adjustment			ICM	
Color Adjustment	Gamma			0	
	Brightness			0	
	Contrast			0	
	Chroma			0	
Advanced settings (In the Layout tab, click “Advanced...”)	Paper/Output	Paper Size		DS40 (6 x 4) DS80 (8x10)	
		Copy Count		1 Copy	
	Graphic	Print Quality		300 x 300dpi	
		Image Color Management	ICM Method		ICM Handled by Host System
			ICM Intent		Pictures
	Document options	Advanced Printing Features		Enabled	
		Pages per Sheet Layout		Right then Down	
		Printer Features	Border		Disable
			Overcoat Finish		Glossy
			Print Re-try		Disable
	2inch cut (DS40 only)		Disable		

2.4 Color management

In [Color Management], this designates the color profile. Default at installation associates [DS40_xxxx]. xxxx is a 4-digit number that refers to the version.

Step 1. From the Printer Properties, select the Color Management tab, and then click “Color Management...”.

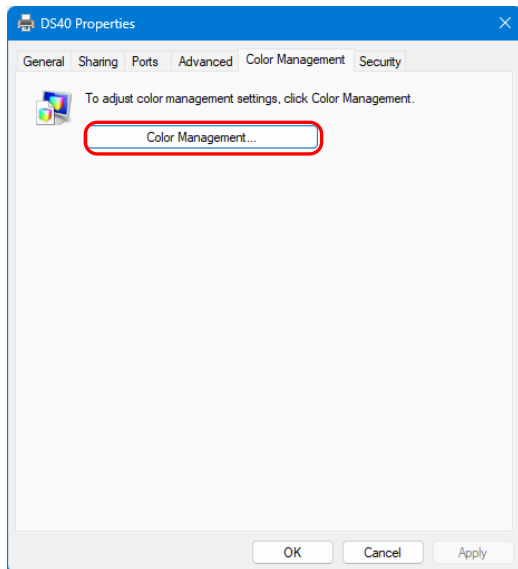


Fig 2.4.1 Color Management Tab

Step 2. From Device, select DS40.

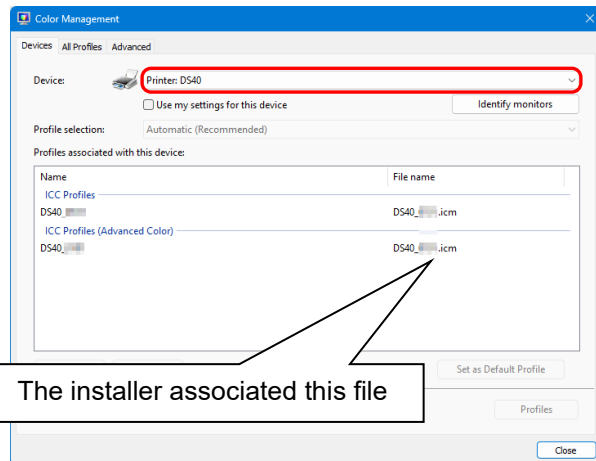


Fig 2.4.2 Color Management Window

2.5 Print Area

The following section shows the image sizes and numbers of dots generated by the paper size setting of the driver.

Model	Paper	Size (inch)	Print Area (mm)	300 x 300 DPI Dot amount	300 x 600 DPI Dot amount
DS40	(5x3.5)	3.5"x 5"	92.1 x 131.1	1088 x 1548	2176 x 1548
	(6x4)	4"x 6"	105.0 x 156.1	1240 x 1844	2480 x 1844
	(5x7)	5"x 7"	131.1 x 181.0	1548 x 2138	1548 x 4276
	(6x6)	6"x 6"	156.1 x 155.4	1844 x 1836	1844 x 3672
	(6x8)	6"x 8"	156.1 x 206.2	1844 x 2436	1844 x 4872
	(6x9)	6"x 9"	156.1 x 232.0	1844 x 2740	1844 x 5480

Model	Paper	Size (inch)	Print Area (mm)	300 x 300 DPI Dot amount	300 x 600 DPI Dot amount
DS80 (*)	(5x3.5)	3.5"x 5"	92.1 x 131.1	1088 x 1548	2176 x 1548
	(6x4)	4"x 6"	105.0 x 156.1	1240 x 1844	2480 x 1844
	(5x7)	5"x 7"	131.1 x 181.0	1548 x 2138	1548 x 4276
	(6x8)	6"x 8"	156.1 x 206.2	1844 x 2436	1844 x 4872
	(6x9)	6"x 9"	156.1 x 232.0	1844 x 2740	1844 x 5480
	(8x4)	8"x 4"	207.3 x 104.6	2448 x 1236	2448 x 2472
	(8x5)	8"x 5"	207.3 x 130.0	2448 x 1536	2448 x 3072
	(8x6)	8"x 6"	207.3 x 155.4	2448 x 1836	2448 x 3672
	(8x8)	8"x 8"	207.3 x 206.0	2448 x 2436	2448 x 4872
	(8x10)	8"x 10"	207.3 x 257.0	2448 x 3036	2448 x 6072
	A4 Length	8"x 11.7"	207.3 x 297.0	2448 x 3544	2448 x 7088
	(8x12)	8"x 12"	207.3 x 307.8	2448 x 3636	2448 x 7272

* With the DS80 printer, the paper size (output size) can be designated as less than 8 inches, but the media used will be the DS80 8 inch width media.

Chapter 3 Update the driver

Removing the driver is the same for both the “DS40” and the “DS80”. The following instructions are for the “DS40”, but if you are using the “DS80”, just read it as “DS80”.

As when performing the installation, log in as an administrator before carrying out this operation.

1. Delete the driver

- 1) Before deleting the printer driver, close all applications. Furthermore, click on the printer to be deleted on the “Printers & scanners” screen, and then click “Open print queue”. Confirm that there are no print jobs, and then start deletion of the driver.

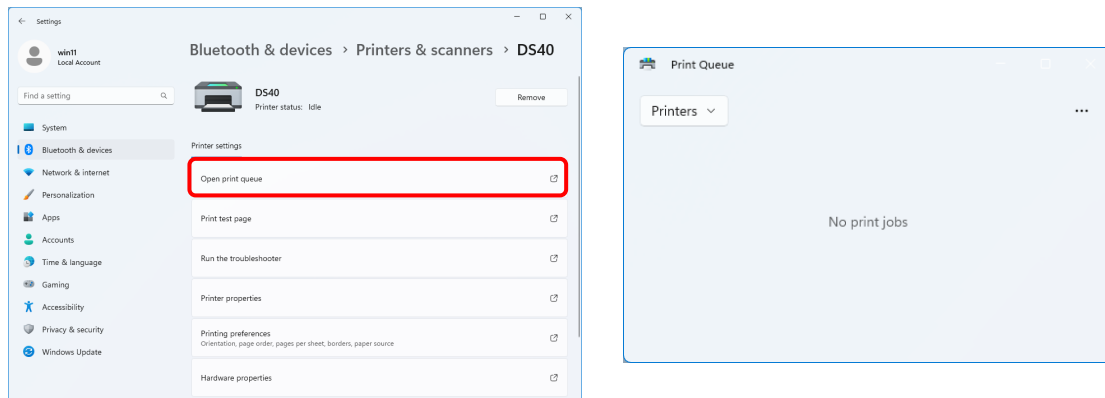


Figure 3.1 Screen when Open print queue is clicked

- 2) From the “Printers & scanners” screen, select DS40, and then click “Remove”.

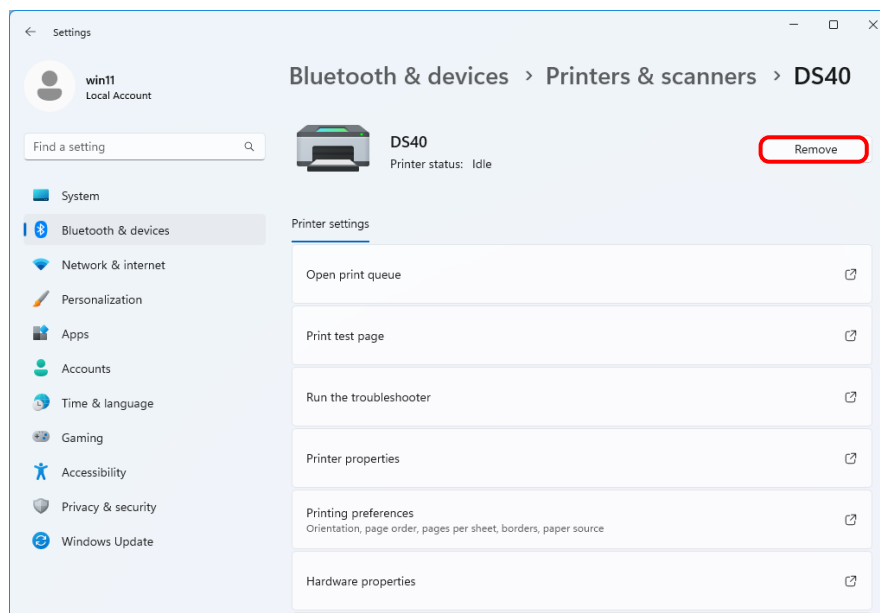


Figure 3.2 Screen when DS40 is selected and Remove is clicked

If the printer is on but not connected, the DS40 icon is not displayed. In such cases, use the following procedure to delete the device.

- (i) Right click “Start”, and then select “Device Manager”.

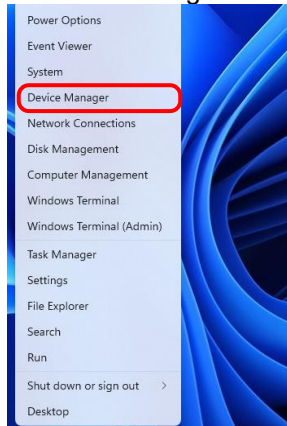


Figure 3.2.i Screen when the Start button is right clicked

- (ii) Click “View”, and then select “Show hidden devices”.

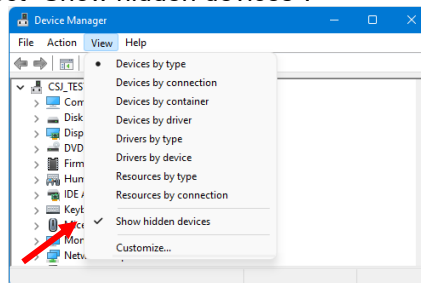


Figure 3.2.ii Displaying the View menu for hidden devices

- (iii) Under “Printers”, right click “DS40”, and then select “Uninstall device”.

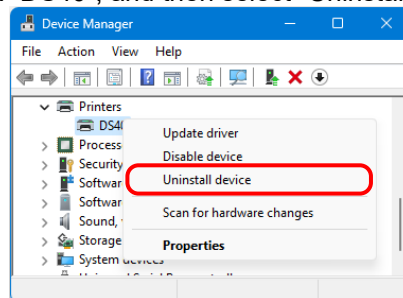


Figure 3.2.iii Displaying the menu to delete DS40

- (iv) At the “Uninstall Device” screen, click “Uninstall”.

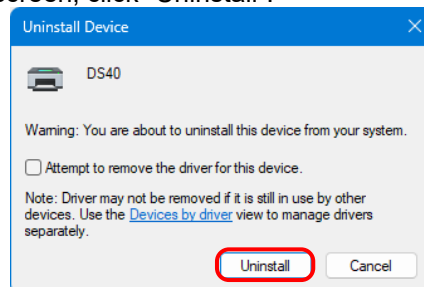


Figure 3.2.iv Uninstall Device screen

3) The printer deletion confirmation dialog box appears. Click “Yes”.

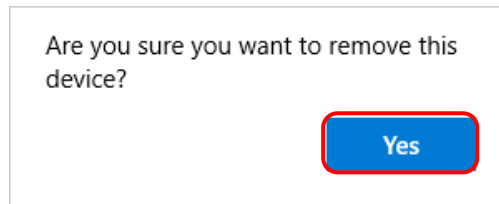


Figure 3.3 Printer deletion confirmation dialog box

4) After removing the DS40 printer, click “Print server properties” in “Printers & scanners”.

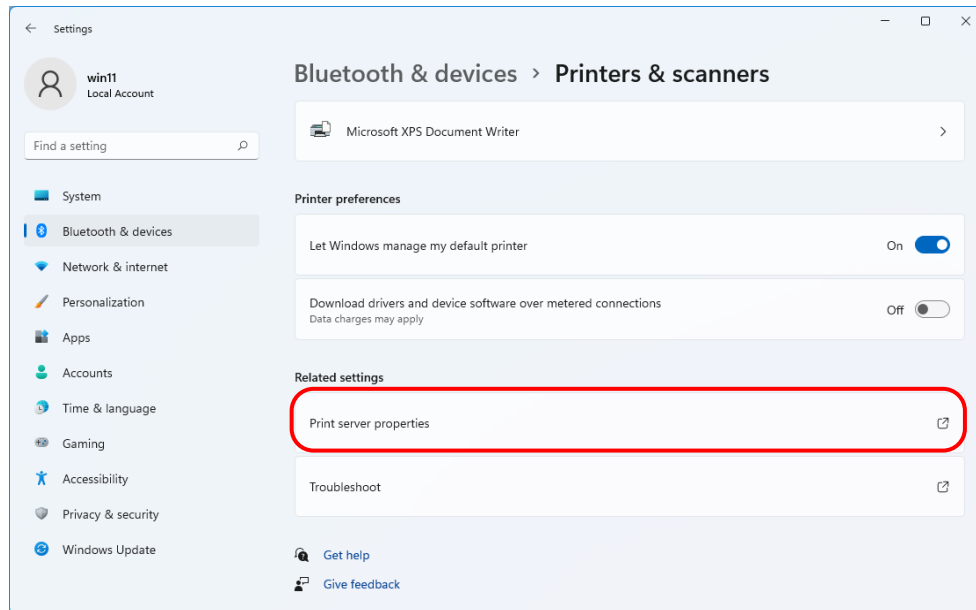


Figure 3.4 Screen when Print server properties is clicked on the Printers & scanners screen

- 5) The “Print Server Properties” dialog box appears. Click the “Drivers” tab. From the installed printer driver list, select “DS40”, and then click “Remove...”.

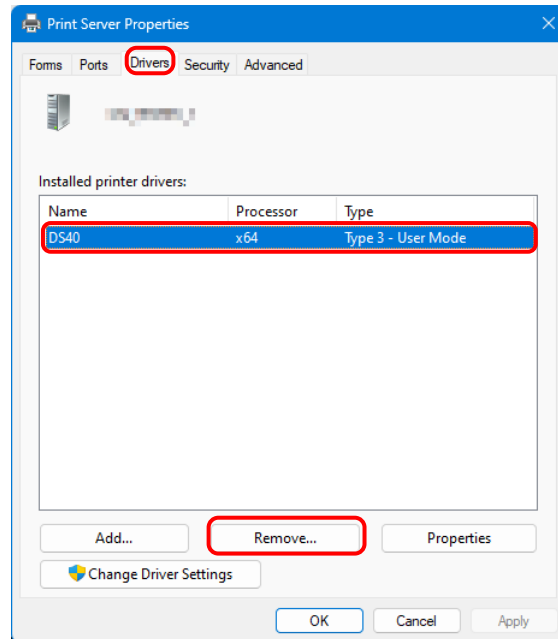


Figure 3.5 Printer Server Properties dialog box

- 6) The “Remove Driver and Package” dialog box appears. Select “Remove driver only.”, and then click “OK”. To delete the driver package, carry out the procedure in the next section, “2. Uninstall the driver package”.

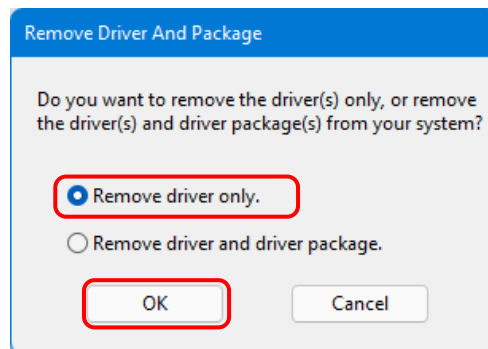


Figure 3.6 Remove Driver And Package dialog box

- 7) The “Print Server Properties” confirmation dialog box appears. Click “Yes”.

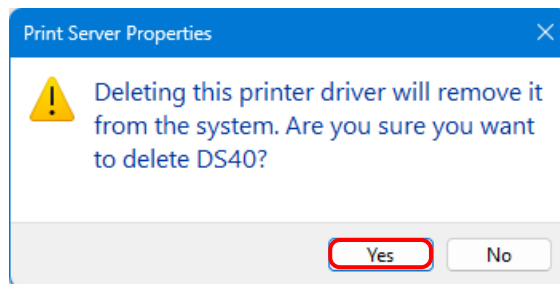


Figure 3.7 Driver deletion confirmation dialog box

If the following message appears, the operating system may be using the driver (Print Spooler service) in the background. Disconnect the USB cable and then restart your computer and try deleting the printer driver again.

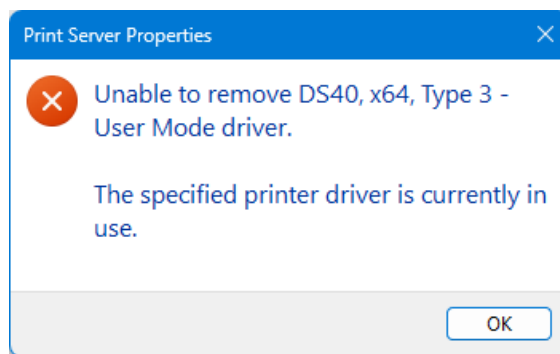


Fig 3.7.i Driver in use

- 8) In the “Print Server Properties” dialog box, confirm that DS40 was deleted, and then click “Close”. After deleting the printer driver, uninstall the driver package.

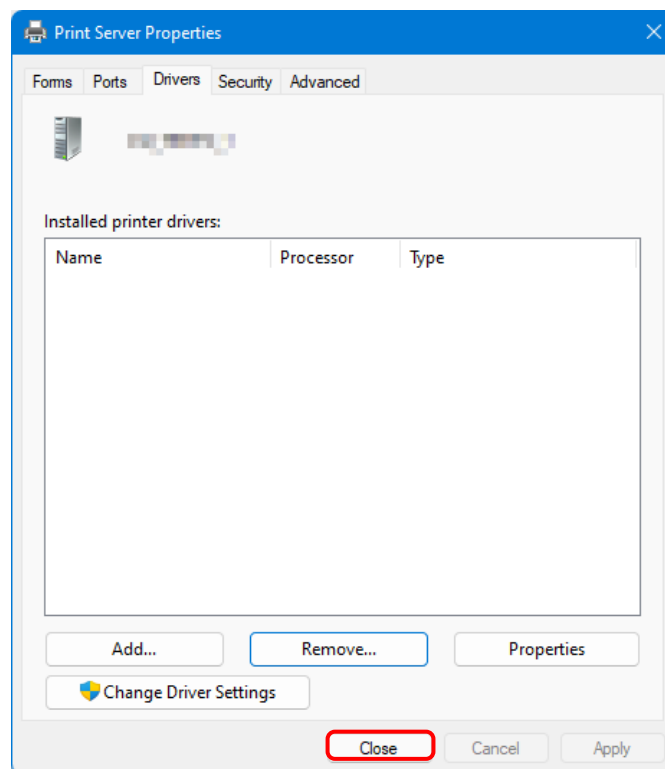


Figure 3.8 Print Server Properties

2. Uninstall the driver package

1) Right click "Start", and then select "Installed apps".



Figure 3.9 Screen when the Start button is right clicked

2) Click the menu display button of "Windows Driver Package - Dai Nippon Printing DS40 (mm/dd/yyyy x.x.x.x)" in the list of apps, and then select "Uninstall".

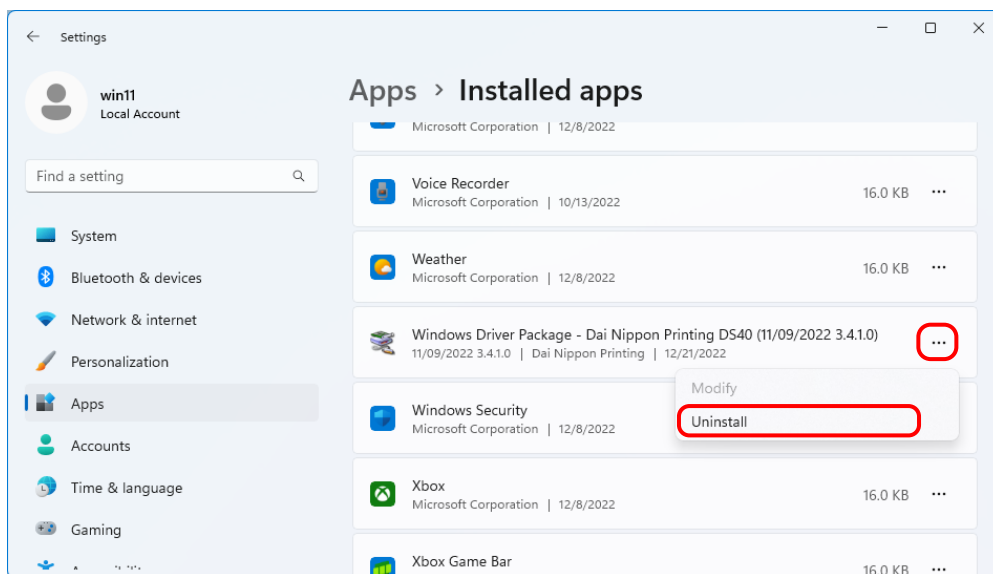


Figure 3.10 Uninstall a program

When the “This app and its related info will be uninstalled.” message appears, click “Uninstall”.

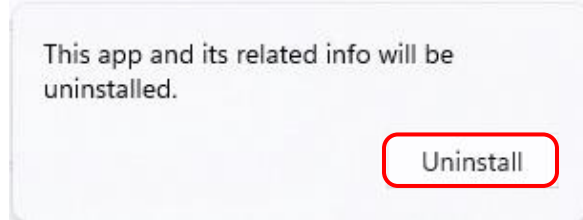


Figure 3.11 Uninstallation confirmation screen

If the User Account Control dialog box appears, click “Yes”.

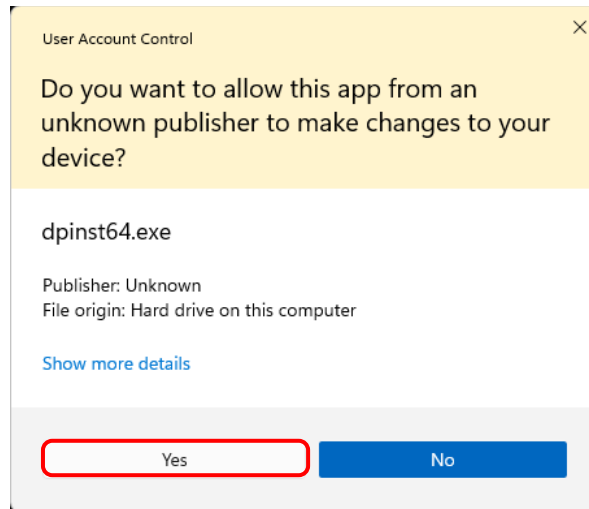


Figure 3.12 User Account Control

- 3) The “Uninstall Driver Package” screen appears. Click “Yes”.
 The program has been uninstalled.
 After uninstalling the printer package, restart the computer.

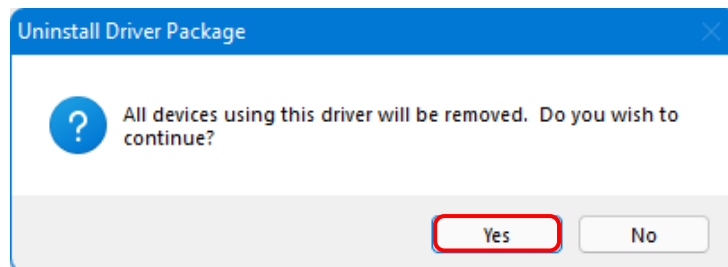


Figure 3.13 Uninstallation confirmation

3. Install an upgrade for the printer driver

After deleting the printer and the printer driver, install the new printer driver. For the installation procedure, see “Chapter 1 Installation”.

4. Restart the computer

After the installation of the printer driver is complete, always restart the computer.
 (Do not print just after installation. Always restart the computer once.)

Chapter 4 Delete the driver

For the procedure to delete the printer driver, see Chapter 3, “1. Delete the driver” and “2. Uninstall the driver package”.

- MEMO -

Dai Nippon Printing Co., Ltd.